



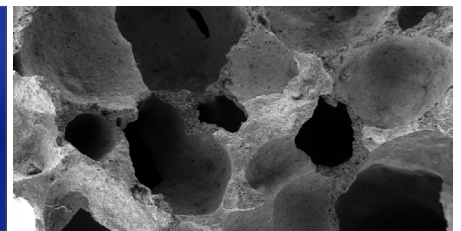
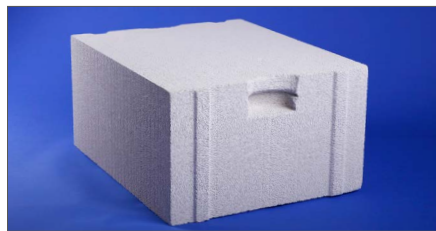
Autoclaved Aerated Concrete (AAC) (p.1/3)

Aluminium Powders - wettable

Product Name	Particle Size d_{50} *1 [μm]	Particle Size d_{90} *1 [μm]	Bulk Density *2 [g/cm^3]	Recommended Application Density [kg/m^3]
7002	~ 150	~ 300	0.18 - 0.25	≥ 600
7004	~ 85	~ 175	0.16 - 0.21	≥ 600
7008	~ 65	~ 130	0.15 - 0.19	500 - 600
7110	~ 40	~ 80	0.11 - 0.15	400 - 500
7112	~ 35	~ 70	0.11 - 0.15	400 - 500
7114	~ 30	~ 58	0.10 - 0.14	100 - 450
7810	~ 40	~ 80	0.11 - 0.15	400 - 500
7814	~ 33	~ 60	0.15 - 0.18	100 - 450
77004	~ 60	~ 140	0.16 - 0.22	≥ 500
77007	~ 50	~ 120	0.14 - 0.18	≥ 500
77009	~ 35	~ 95	0.15 - 0.18	450 - 600
77010	~ 25	~ 70	0.11 - 0.15	400 - 500
77012	~ 25	~ 60	0.11 - 0.15	400 - 500
77013	~ 22	~ 50	0.11 - 0.15	400 - 500
77014	~ 21	~ 48	0.11 - 0.15	100 - 450
87007	~ 50	~ 120	0.14 - 0.18	≥ 500
87012	~ 25	~ 60	0.13 - 0.15	400 - 500
87013	~ 25	~ 50	0.13 - 0.16	300 - 450

Test Methods: *1 AQS-044 *2 AQS-001

All powders are available in reaction-delayed versions and are available as DEG-Pastes.



Data in this publication is based on careful investigations and is intended for information only. All information shall not be binding, shall carry no warranty as to certain ingredients, as to the fitting for a special purpose, as to the merchantability, or as to the industrial property rights of third parties. Any and all users are obliged to carry out tests on their own authority as well as to check the suitability and the danger of the respective product for a particular application. SCHLENK assumes no liability in this regard; neither to the exactness nor to the completeness of the data. We apply our General Sales Conditions to be found on www.schlenk.com. CS 02/2024



Autoclaved Aerated Concrete (AAC) (p.2/3)

Aluminium Powders - not wettable

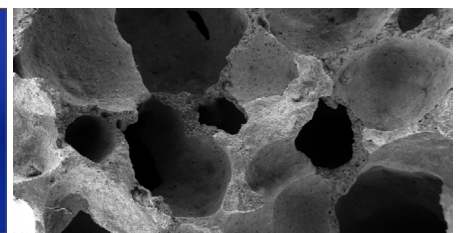
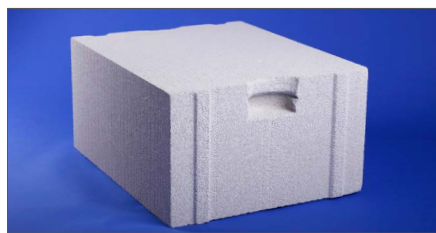
Product Name	Particle Size d_{50} *1 [μm]	Particle Size d_{90} *1 [μm]	Bulk Density *2 [g/cm^3]	Recommended Application Density [kg/m^3]
UP30	~ 65	~ 150	0.10 - 0.20	≥ 500
76004	~ 60	~ 140	0.16 - 0.23	≥ 600
76007	~ 55	~ 125	0.15 - 0.21	≥ 500
76010	~ 25	~ 70	0.11 - 0.15	400 - 500
76013	~ 22	~ 50	0.11 - 0.15	300 - 450
76014	~ 21	~ 48	0.11 - 0.16	100 - 450
86013	~ 22	~ 43	0.13 - 0.18	300 - 450

Waterborne Pastes

Product Name	Particle Size d_{50} *1 [μm]	Particle Size d_{90} *1 [μm]	Recommended Application Density [kg/m^3]
Aquapor 400 series	~ 60	~ 130	≥ 600
Aquapor 1000 series	~ 35	~ 100	500 - 600
Aquapor 3000 series	~ 25	~ 85	500 - 600
Aquapor 7000 series	~ 18	~ 50	400 - 500
Aquapor 9000 series	~ 13	~ 35	100 - 400
Aquapor 4204	~ 60	~ 130	≥ 600
Aquapor 4207	~ 55	~ 115	≥ 600
Aquapor 4209	~ 38	~ 95	≥ 500
Aquapor 4210	~ 30	~ 75	400 - 500
Aquapor 4213/W	~ 22	~ 50	350 - 450

Test Methods: *1 AQS-044 *2 AQS-001

All powders are available in reaction-delayed versions and are available as DEG-Pastes.
 All pastes are available with different solid content and different reaction delay.



Autoclaved Aerated Concrete (AAC) (p.3/3)



Solventborne Pastes (Diethylene Glycol) „stabilized“

Product Name	Particle Size d ₅₀ *1 [µm]	Particle Size d ₉₀ *1 [µm]	Recommended Application Density [kg/m ³]
DEG/450 series	~ 60	~ 130	≥ 600
DEG/1500 series	~ 35	~ 100	500 - 600
DEG/3500 series	~ 25	~ 85	500 - 600
DEG/7500 series	~ 18	~ 50	400 - 500
DEG/9500 series	~ 13	~ 35	100 - 400
DEG/4504	~ 60	~ 130	≥ 600
DEG/4507	~ 55	~ 115	≥ 600
DEG/4509	~ 38	~ 95	≥ 500
DEG/4510	~ 30	~ 75	400 - 500
DEG/4513	~ 22	~ 50	350 - 450

Solventborne Pastes (Diethylene Glycol) from Wetable Powder „not stabilized“

Product Name	Particle Size d ₅₀ *1 [µm]	Particle Size d ₉₀ *1 [µm]	Recommended Application Density [kg/m ³]
DEG/7004/77	~ 60	~ 130	≥ 600
DEG/7009	~ 35	~ 100	500 - 600
DEG/7112	~ 25	~ 85	400 - 500
DEG/7114	~ 18	~ 50	100 - 450
DEG/7814	~ 18	~ 50	100 - 450
DEG/77013	~ 25	~ 85	400 - 500
DEG/77014	~ 18	~ 50	100 - 450
DEG/87116/65	~ 12	~ 32	100 - 200

Test Method: *1 AQS-044

All pastes are available with different solid content and different reaction delay.

